

Materials Testing Accessories Newsletter

In This Issue: Bluehill® 3 – Simplicity with Power

Although there are other suppliers of materials and component testing instruments, none have invested as much in software as Instron. We strongly believe that one of the key factors in achieving accuracy, repeatability, and efficiency in testing lies in the interface between the instrument and the user.

The Bluehill testing platform has now been on the market for more than six years. The ease of use delivered with Bluehill was refined with the release of Bluehill 2, and now the software has been enhanced again.

Bluehill 3 keeps the ease of use and professional appearance of previous versions while adding more power and flexibility within the calculations. This newsletter will touch on Bluehill 3's capabilities, but to get the full picture of those parts that interest you please follow the links available or contact your local Instron office.



More Information

[Bluehill 3 FAQs](#)

Contact Us

Tel (US):
+800 564 8378

Tel (Europe):
+44 1494 456815

[Online Request](#)

Related Links

- Fourth Edition of the [Accessories Catalog for Materials Testing](#) is now available!



New to Bluehill 3



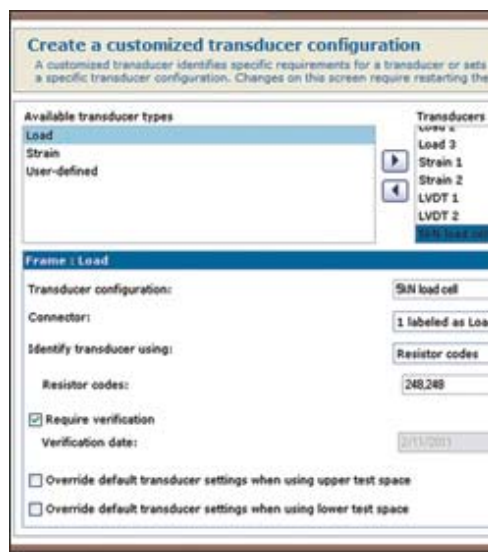
Expression-Based Measurements

The expression builder allows users to create formulas, virtual calculations, custom calculations, and logical expressions that can evaluate specific values without requiring custom software. It calculates the value of any expression if the formula is comprised of predefined values and follows standard algebraic rules. The range of custom formulas that users can create is limitless - simply type the formula into the expression window or select values from the variables list and add the necessary mathematical function.

Transducer Identification

The ability to label transducers will help users with traceability and conformity to their own internal standards and procedures. Users can label and link specific transducers to specific methods, while also checking that those specific transducers are date verified.

- **Transducer Identification**
Identify a transducer by R-code or serial number and give it a name that is easily remembered.
- **Track Verification**
Document and track verification due dates to guarantee that all devices meet specification
- **Link with Methods**
Your named transducers can be found within the Method, ensuring the correct device is used every time.



Real-Time Peak, Modulus, and Yield Displays

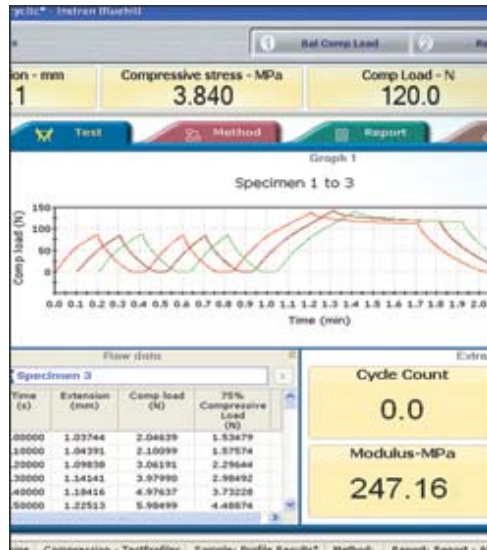
The addition of real-time data will help technicians when sample numbers are limited. One common example is that the real-time modulus displays can help prevent technicians from passing from elastic to plastic regions before it is too late and rendering the sample useless if they have not set the sample up correctly.

- Missed previous issues of the Accessories Newsletter? Catch up at the Instron [Library](#). Follow the link and select "Newsletter" as the Document Type.
- Visit our [Testing Solutions](#) to find technical tips relevant to your testing application.

Future Events

For a list of upcoming shows that Instron will be attending, please visit the [Events](#) page of our website.

- **Extra Live Displays**
With real-time calculations, results, and measurements available for display; sometimes the 4-console displays is not enough.
- **Test Profiler***
Displayed graphically on the screen, it enables fast and easy cyclic test development, and allows you to build blocks that link together and define the test.
*Advanced option
- **Virtual Measurements**
Define a measurement using a mathematical expression with variables, such as other measurements or number inputs. Performed in real-time, these measurements can be shown in live displays, plotted on graphs, and used for calculations.
- **Real-Time Calculations in Live Displays**
Know results as soon as they happen. The real-time modulus allows users to stop the test before material yield if the modulus result isn't as expected.



Data Analysis

- **Continue**
Choose to add more test specimens to a data file or edit the original test method to update calculations.
- **Replay***
Analyze previously tested data in any method. Each customer may want a specific set of calculations and results. Replaying a data set (sample file) through different methods allows users to quickly and easily create customized test results for different audiences.
*A feature of the Analysis advanced option
- **Recalculate**
Modify or add new calculations at any time and click recalculate to see a live update of all results and graphs.
- **Copy and Paste**
Copy and paste graphs, results or raw data directly into Microsoft® Word or Excel®, eliminating otherwise necessary steps of opening applications and searching for files.



Export your Data

- **Automatic**
Use the Application Programming Interface (API) to program an automatic export of results from Bluehill to your own Laboratory Information Management System (LIMS).
- **Manual**
Customize the format of raw data or test results to import into your own data analysis tools.

What Bluehill 3 Cab Do For You

- Laboratory Technicians
- Laboratory Managers
- Quality Engineers
- Research and Development Engineers
- Educators and Students

Application Modules

Bluehill 3 is produced to suit your industry. Each application module includes preconfigured methods to relevant industry standards. These methods will include the required test control, calculations, and results specific to the requirements set out in ASTM, EN, or ISO standards.

If you feel your business does not fit any of the application field Bluehill 3 can be purchased without any preconfigured methods. (General and Components). However, if you are a test center and have an interest in all method types, all application modules can be purchased with the Test method suite. Having these preconfigured methods does not preclude you from writing and adding you own methods. To see the range of applications and testing solutions, please visit the links below.

Advanced Options

In addition to the application packages, there are a number of additional options that can be added to enhance your testing.

- **Test Method Suite** – A library of pre-configured test methods for all applications
- **Test Profiler** – Provides the ability to create custom test routines for cyclic and complex testing
- **TestCam** – Record and replay the actual test event associated with each test curve
- **Enhanced Analysis** – Reanalyze a previously tested sample using a different test method without enabling the test frame

For more information on Accessories, visit us [on the web](#), submit an [online request](#), or call us at +800 564 8378 (US only) or +44 1494 456815 (Europe only)

Are you testing something a little different? Do you think more people should know about it? Would you like to submit an article for possible publication in the Instron accessories newsletter? If so, please [submit your story](#).

What do you think? Tell us!



Worldwide Headquarters

825 University Ave, Norwood, MA 02062-2643 USA
+800 564 8378

European Headquarters

Coronation Road, High Wycombe, Bucks HP12 3SY UK
+44 1494 456815

<http://www.instron.com/>

To select other newsletters or to unsubscribe, please go to your [Subscriptions](#) page.