

2712 Series Pneumatic Lead Pull Grip

Catalog Number 2712-212/213/214

Application

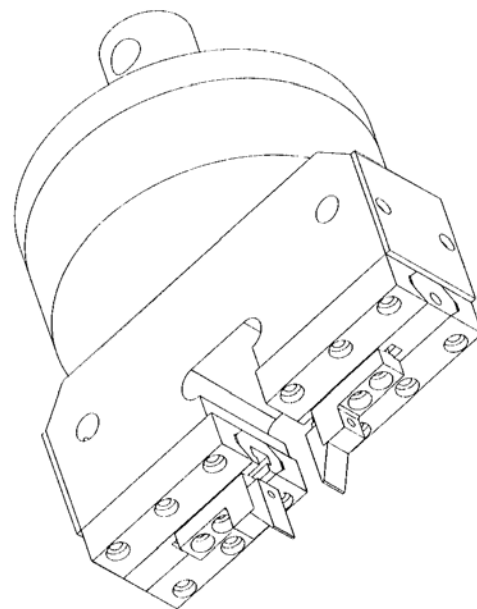
The pneumatic lead pull grip is optimised for the needs of wire and lead pull testing on electronic components and assemblies. In a typical test configuration the assembly would be mounted in a PCB clamping stage (e.g. Instron® 2860-200) fitted to an X-Y translation stage (e.g. Instron 2860-100) on the base of a test machine and the grip would be mounted below the load cell on the moving crosshead or actuator.

Description

The grip is fitted with specially designed needle nose jaw faces to allow gripping of small leads, wires and components. The actuator of the grip body remains well behind the grip face, to allow gripping of components in confined or restricted spaces. The jaw faces attach via T-slots, this allows the gripping width to be adjusted to suit a wide range of component sizes and shapes. In addition, the ability to attach jaw faces via the T-slots allows for easy customisation.

Features

- The pneumatic lead pull grip is a parallel action pneumatically operated vice action grip, fitted with needle nose jaw faces for lead pull testing on electronic assemblies
- Capacity:
 - 2712-212 500 N (100 lb, 50 kgf)
 - 2712-213 1 kN (200 lb, 100 kgf)
 - 2712-214 2 kN (400 lb, 200 kgf)
- Temperature range: 0 °C to +60 °C (32 °F to +140 °F)
- Fittings: Type Om (12 mm connection with 6 mm clevis pin)



▲ 2712-212/213/214 pneumatic lead pull grip