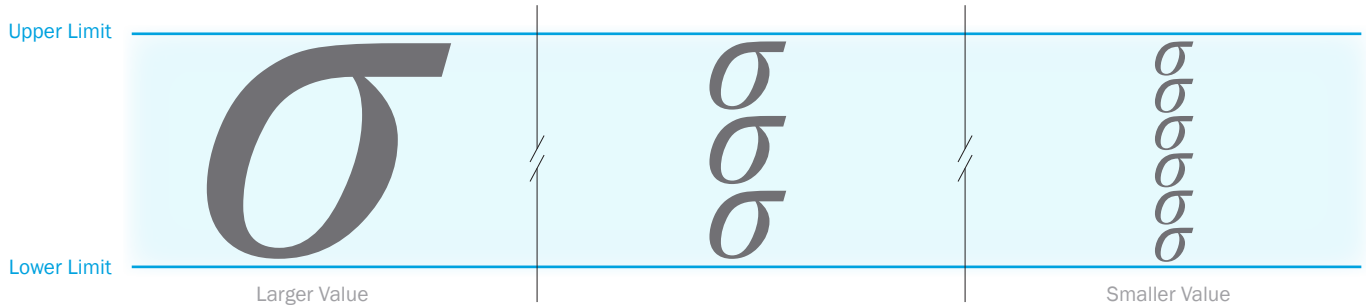


TrendTracker™ | Quality Control Challenge

Is your quality above average?

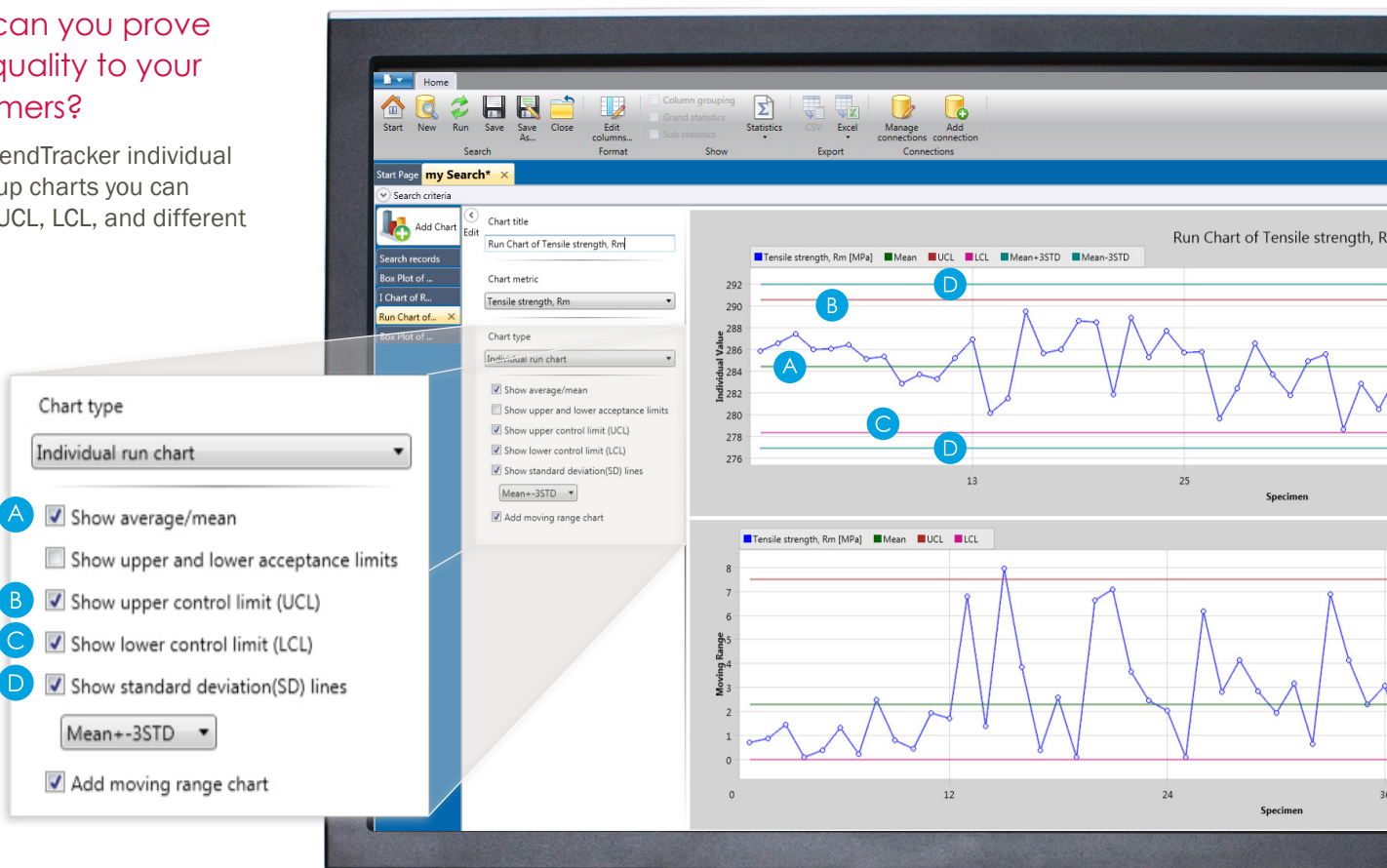
Sigma (σ) is the standard deviation in a set of measurements with the same expected value. For a production process, a smaller deviation means a well-controlled quality process with fewer defects (samples where the measure is out of the specified limit). Here is how a smaller value of σ leads to so-called six sigma process:



Every product has a target specification with a tolerance band. If the value of σ is small, more sigmas can be fit between the specification limits. As the value of σ decreases, the production process moves towards 6σ .

How can you prove your quality to your customers?

Using TrendTracker individual and group charts you can overlay UCL, LCL, and different



Can you find the difference between Batch A and Batch B?

Your company is making adjustments to their raw material manufacturing process in order to reduce the cost of the product. Modulus data was gathered to compare specimens prepared with the new method (Batch A) and the current method (Batch B). Should the quality manager approve the new method of manufacturing?

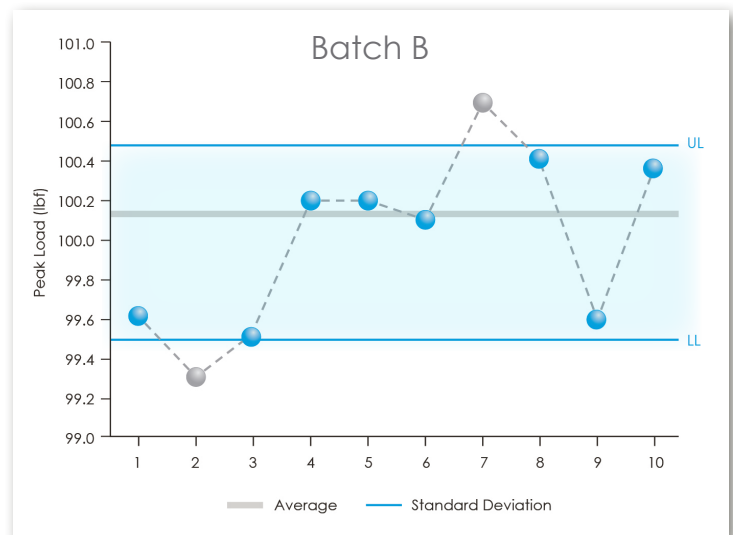
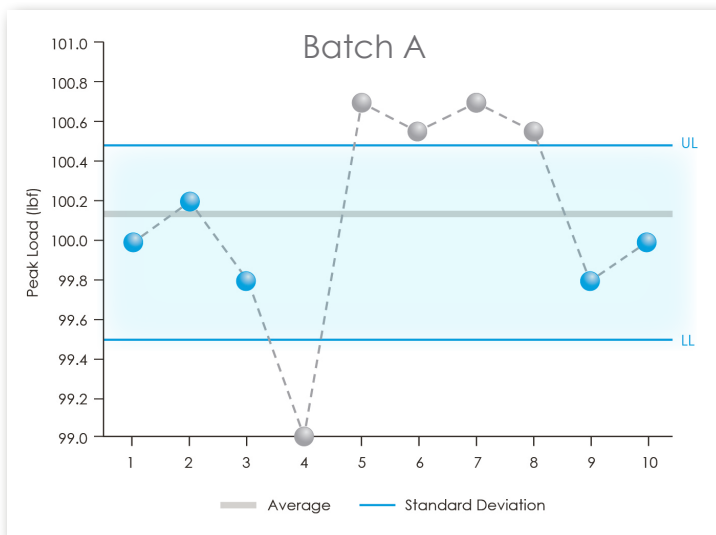
Modulus Analysis

		1	2	3	4	5	6	7	8	9	10	Average	Standard Deviation
Batch A	Gpa	100.0	100.2	99.8	99.0	100.7	100.6	100.7	100.6	99.8	100.0	100.1	0.5
Batch B	Gpa	99.6	99.3	99.5	100.2	100.2	100.1	100.7	100.4	99.6	100.4	100.0	0.5

Let Us Visualize

Using Intron® TrendTracker software visualization capabilities you can quickly plot the data gathered for specimens from Batch A and Batch B. According to Western Electric zone rules, if four out of five consecutive points fall beyond the 1σ limit, on the same side of the centerline like Batch A below, the process is considered unstable.

Conclusion: Batch A process are unstable and further investigation is required.



www.instron.com



Worldwide Headquarters
825 University Ave, Norwood, MA 02062-2643, USA
Tel: +1 800 564 8378 or +1 781 575 5000

European Headquarters
Coronation Road, High Wycombe, Bucks HP12 3SY, UK
Tel: +44 1494 464646

Instron Industrial Products
900 Liberty Street, Grove City, PA 16127, USA
Tel: +1 724 458 9610