



MAX™ Cyclic Fatigue Software Operator's Course

Realise the potential of your operator personnel and investment in Instron® equipment through comprehensive 'hands-on' interactive instruction.

Duration: 2 days

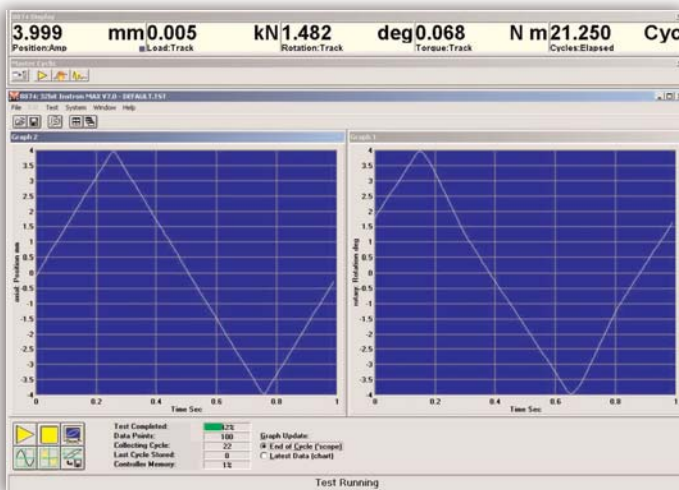
Who Should Attend?

- New MAX operators
- Test instrument operators
- Lab supervisors
- Product engineers, product inspectors
- Anyone who installs, customises, or administrates Instron MAX Software
- New WaveMaker™ operators

Course Objectives

After completing this course, students will be able to:

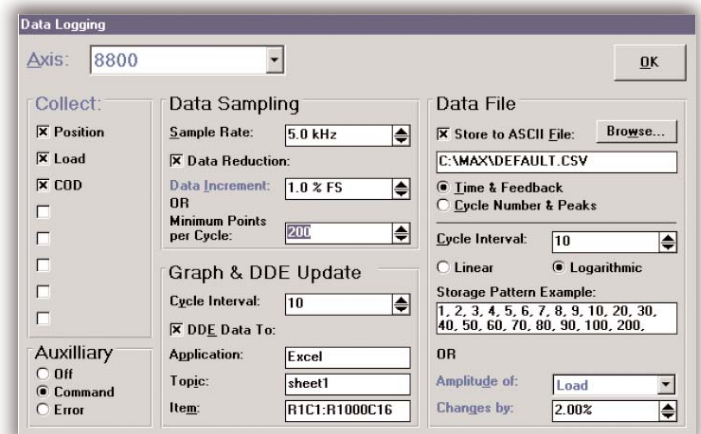
- Configure your display screen and control panel
- Set-up control test parameters
- Set-up limits and closed loop control gains (PID)
- Set-up various data logging options
- Electronically calibrate and balance your transducers
- Run waveform preview feature
- Set-up statistics, calculations and result tables
- Save and retrieve your test methods
- Set-up various fatigue testing applications
- Import CSV files for spectrum loading
- Run your tests, generate graphs/reports and results



Simple fatigue.

Course Description

Comprehensive computer and system training on MAX multi-axis cyclic software. Students will learn how to design and run tests ranging from simple LCF to complex random simulations. Instruction on the setup of statistics, calculations and result tables will also be covered.



Data logging window.

Course Outline

Day 1

9:00 a.m. - 4:45 p.m. (approximately)

- Introduction to MAX™ for Windows
- Program features
- Installing MAX
- Starting and operating MAX
- MAX menus
- MAX toolbars
- Live displays
- Graphs
- Setting system parameters
- System setup
- Axis selector
- Axis type
- Setting channel parameters
- Channel setup screen
- Channel selector
- Calibration
- Loading and saving tests
- Designing a test
- Running a test
- Messages

Day 2

9:00 a.m. - 4:45 p.m. (approximately)

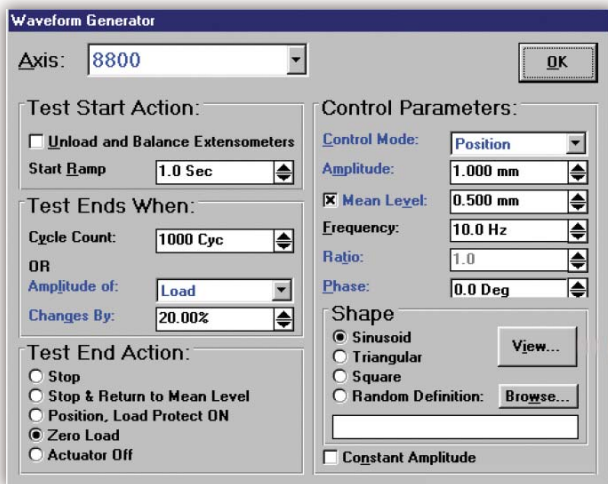
- Create user-defined waveforms
- Create a custom waveform
- CSV file format
- Import a CSV file
- Custom waveform type
- Save the RDF file
- Test sequencer
- Creating a sequence
- Running a sequence
- Troubleshooting
- File sharing
- Importing CSV values
- Data overflow
- File options and parameters

Prerequisites:

- A fundamental operating knowledge of modern PC's, including the basic use of MS Windows
- A familiarity with materials testing concepts and principles
- Test instrument operation experience would be an advantage
- Completion of the single axis 8800 series operators course

Training Material:

- Training manual included



Waveform generator.

To register for a course, please contact us at
Telephone: +44 1494 456815 ■ Fax: +44 1494 456667 ■ Email: Extra-Uk@instron.com

Corporate Headquarters

Instron Corporation
825 University Avenue
Norwood, MA 02062-2643 USA
Tel: +1 800 564 8378
+1 781 575 5000
Fax: +1 781 575 5725

European Headquarters

Instron Limited
Coronation Road
High Wycombe, Bucks
HP12 3SY United Kingdom
Tel: +44 1494 464646
Fax: +44 1494 456814

Instron S.A.

11 Parc Ariane
Guyancourt, Cedex 78284
Tel: +33 1 39 30 66 30
Fax: +33 1 30 64 67 11

Instron International Ltd

Via G Stephenson 94
20157 Milano, MI, Italy
Tel: +39 02 390 9101
Fax: +39 02 3900 5302

Instron Deutschland GmbH

Landwehrstrasse 65
D-64293 Darmstadt
Tel: +49 6151 3917 333
Fax: +49 6151 3917 503

Instron Limited Sucursal Spain- Portugal

C/ Argenters 2
Parque Tecnológico del Vallés
Cerdanyola, Barcelona 08290
Tel: +34 93 594 7561
Fax: +34 93 592 0760



Instron is a registered trademark of Instron Corporation.

Other names, logos, icons and marks identifying Instron products and services referenced herein are trademarks of Instron Corporation and may not be used without the prior written permission of Instron.

Other product and company names listed are trademarks or trade names of their respective companies.

Copyright © 2006 Instron Corporation. All rights reserved.

All of the specifications shown in this brochure are subject to change without notice.

www.instron.com

pod_MAXOperatorsCourse_0106